

D4-e Kit



Gear Pump Hot Melt Unit, Manual Gun and Hose

A Complete, Ready to Use Configurable Kit

Valco Melton's D4-e Kit provides everything you need for fast and precise manual applications. This kit includes the D4-e Gear Pump Hot Melt Unit, one corrugated hose, and one A4 Manual Gun (bead or spray, including nozzle). This packaged solution is ideally suited for a range of packaging, paper converting, print finishing, non-woven and product assembly applications.

Valco Melton's D4-E Kit offers:

- A wide range of options to configure your own kit: Spray or Bead Gun with top or bottom feed, spray or bead nozzles, and various lengths of corrugated hoses.
- A cost-effective solution for accurate manual applications.
- Teflon® coated tanks for easy maintenance and reliable operation.
- A large capacity gear pump that delivers 27kg/hour.
- Solid-state controls, precise RTD temperature controls to optimize system performance.



New connector allows for easier manual applications.



Corrugated hose for increased resistance and safer operation.

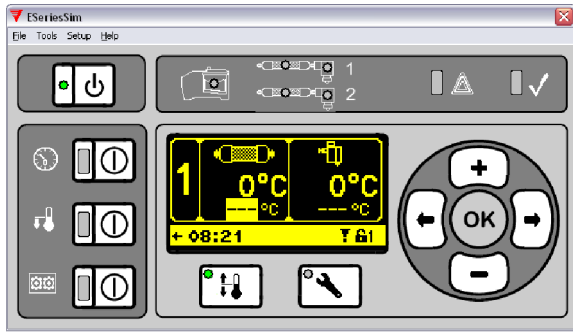


Teflon® coated tank for a faster and easier maintenance.



Outlets for 2 hoses to facilitate simultaneous use of two guns

D4-e Kit



D4-e units feature an easy-to-use touch pad with a bright LCD screen which allows operators to quickly setup system parameters and monitor system operation with a user-friendly interface.

D4-E system touch-pad PID controller features:

- graphical display/interface
- programmable sequential zone start-up
- automatic temperature setback
- high/low temperature protection
- Fahrenheit or Celsius option
- system diagnostics
- seven-day programmable clock
- two user selectable inputs and one selectable output
- password protection for setup configuration

Technical Specifications

D4-e Characteristics		Hot Melt Hose Characteristics	
Tank Capacity:	4.0 kg	Max. Working Temperature	220°C
Melt rate:	5.0 kg/hr	Internal Diameter (mm)	Ø8
Motor:	1/4 HP Fixed Speed AC	Max. Working Pressure	100bar
Pump rate:	27 kg/hr	Power Consumption	150 W/m
Temp. range	30-230°C	RTD	NI-120
Temp. Stability:	0.5°C	Minimum Curvature Radius (180°)	160 mm
Electrical:	110/120 VAC or 200/240 VAC 20 AMP single phase with ground	Voltage	200-240 V AC

A4 Manual Gun Characteristics	
Operating Temp.	240 ° C / 464 ° F
Operating Hydraulic Pressure	50 bar
Air Pressure	4 - 6 bar / 58 - 87 psi
Electric Supply	200-240 VAC 50/60 Hz

ISO 9001

QUALITY SYSTEMS



For more information visit www.valcomelton.com, or contact your local representative.

World Headquarters: USA, Cincinnati, Ohio (Corporate Offices) • Tel: 513.874.6550 • Fax: 513.874.3612 • info@meltonhotmelt.com

European Headquarters: Spain, Navarra • Tel: +34.948.321.580 • Fax: +34 948 326 584 • melton@melton.es

Asian Headquarters: China, Xiamen, Fujian • Tel: +86.592.591.7854 • Fax: +86.592.591.7834 • china@valcomelton.com

www.valcomelton.com • Serving Over 52 Countries Worldwide.

